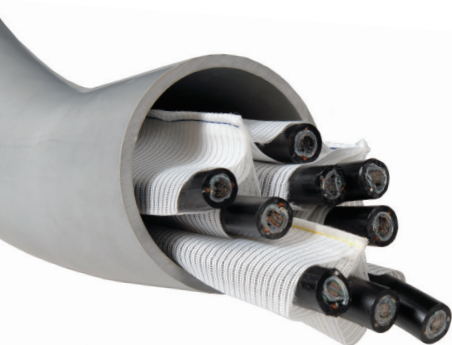


Quick Reference Specification Sheet

4G 44mm Fabric Innerduct



MaxCell™ is a flexible fabric innerduct system designed specifically for increasing efficient cable deployments. The unique textile construction allows MaxCell™ to conform to the shape of cables placed within, greatly reducing wasted space.

Technical Information

Material Fabric	Warp - Polyester Monofilament Filling - Nylon/Polyester
Material Pull Tape	High Tenacity Multifilament Polyester 565kg (5.54kN) / Optional 1135kg (11.13kN)
Sewing Line	High Tensile Polyester
Temperature range	-30°C to 100°C
Lubricate	100% Silicon Oil
Friction	~75% Lower Resistance
Breaking Tensile#	1 Cell >445kgs 2 Cell >807kgs 3 Cell >1169kgs
% Elongation @ 50kgs	<5%
Melting Point	>215°C
Thermal Expansion	8.4mm/100m/5°C
Detectable Wire	Optional AWG 18Ga. (0.75mm ²) Solid Core Copper with Vinyl and Nylon Insulation
Reel Length	2500m (Standard) Min 150m/ Max 6300m (3 cell)
Chemical Resistance**	Resistance to ground chemicals and petroleum products

According to ASTM D5035.

** Refer to 4G Technical Manual for more details

Key Features

- Configurations in 1, 2, and 3 cells to match network requirements
- Available in Standard, Detectable, and Fire Resistant versions
- Pre-installed color-coded pulling tapes are standard
- Pre-lubricated for lower pulling tensions

Standard

4G 4418-1*	1 Cell Standard
4G 4418-2*	2 Cell Standard
4G 4418-3*	3 Cell Standard

Detectable

4G D4418-1*	1 Cell Detectable
4G D4418-2*	2 Cell Detectable
4G D4418-3*	3 Cell Detectable

Application

Minimum Duct/Conduit ID: 40mm
Maximum cable diameter for each Cell: 18mm
See Design Manual for Overlay and Multiple packs installation.

Accessories

Milliken Pull Tapes (Standard)

MT565-xx	565kg Pull Tape
MT815-xx	815kg Pull Tape
MT1135-xx	1135kg Pull Tape

Milliken Pull Tapes (Detectable)

DT565-xx	565kg Pull Tape
DT815-xx	815kg Pull Tape
DT1135-xx	1135kg Pull Tape

Tools for Installation

Swivel	Pull Tape
Scissors	Extra Lubricant
Vinyl Tape	Cable grip

* Designate color of thread RD (Red), BK (Black), BL (Blue), YL (Yellow)

xx Designate spool length 900 (900m spool), 1500 (1500m spool)

Milliken Design, Inc.
PO Box 220, Belfield NSW Australia
Ph. +61 2 97035410
MillikenInfraSol@milliken.com
www.maxcell.com.au

Milliken™