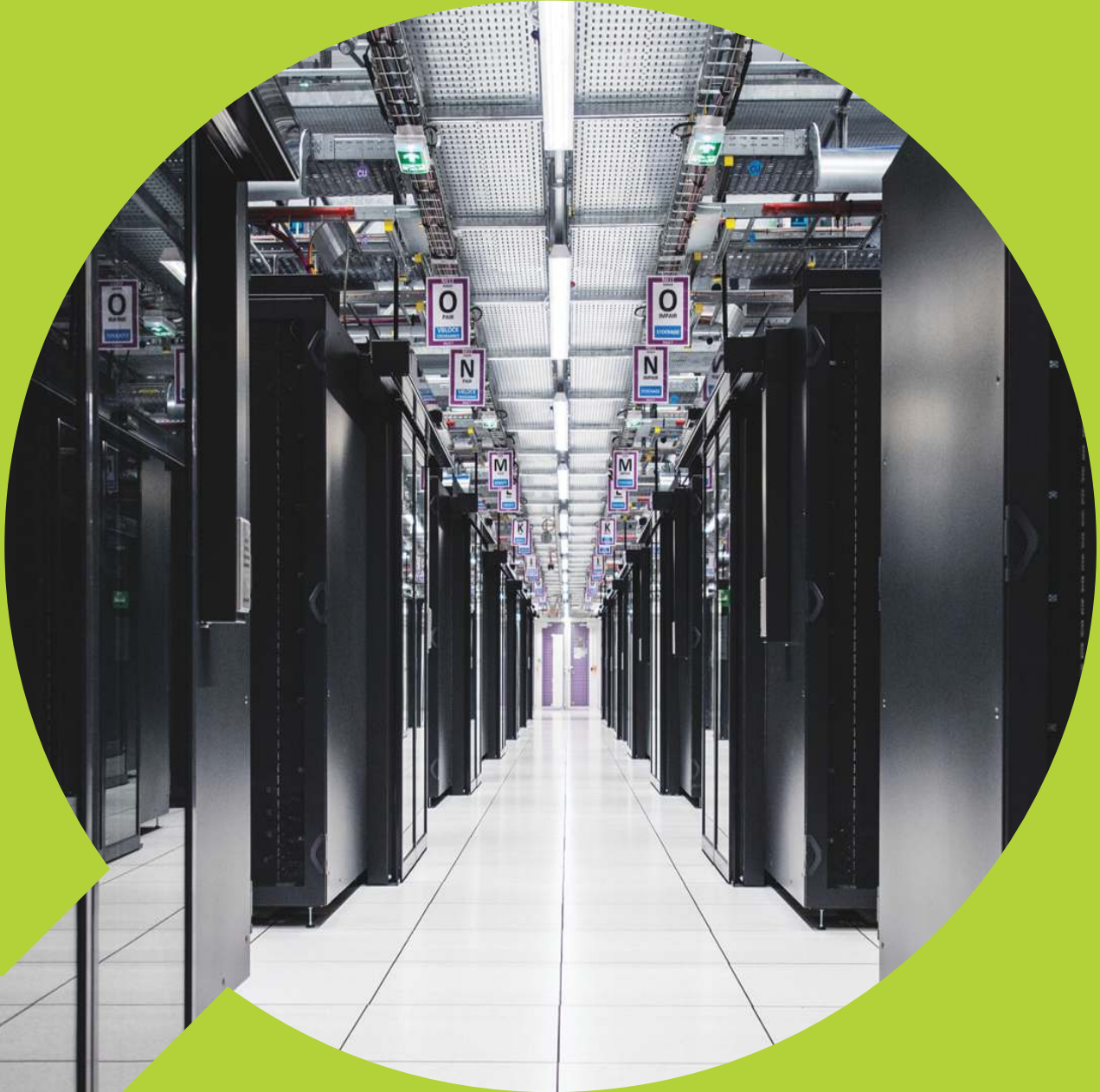


#smartconnection



## Data Center Cabinet & Rack Solution

[www.aginode.net](http://www.aginode.net)



## Data Center Cabinet & Rack Solution

In today's digital era, data centers play a pivotal role in storing, managing, and processing vast amounts of data. A well-designed data center cabinet & rack is crucial for ensuring optimal performance, reliability, and scalability. Here, we present a comprehensive solution for data center cabinets and racks that addresses key challenges and offers cutting-edge features to enhance operational efficiency.

Aginode data center cabinet & rack solution is designed to cater to the diverse needs of businesses, ranging from small-scale enterprises to large corporations. The solution encompasses the following key aspects:



01



### High-Density Deployment

Our cabinet and rack solutions support high-density deployment, allowing for the accommodation of multiple servers, storage devices, and networking equipment within a compact footprint. This enables organizations to maximize their ROI benefit.

02



### Modular Design

The modular design of our cabinets and racks allows for easy scalability and flexibility. Components can be added or removed without disrupting the entire system, ensuring seamless expansion and upgrades.

03



### Energy Efficiency

Our cabinets and racks are designed to minimize energy consumption, reducing operational expenses and environmental impacts.

04



### Security

Aginode data center cabinets and racks provides optional advanced security methods including IC Card access, biometric access control to protect sensitive data and equipment.

## Data Center Cabinet Series

### Application

Aginode high quality universal cabinet is designed to install products of Aginode. The back door of cabinet is equipped double open door to save the space; the cabinet side use material of high quality cold-rolled steel plate which can be conveniently disassembled without tools. the cabinet top and bottom are installed with fixed triangle, to strengthen the cabinet structure; the cabinet body with aluminium magnesium alloy type material which is corrosion resistance, electrical conductivity, non-magnetic, and with very good strength.

- ANSI/EIA-310-C/D
- The internal equipment column is designed with double rail without segment and can be adjusted slightly.
- The fixed column of the equipment is marked with the number of RMU by silk screen to facilitate the accurate positioning of the equipment.
- Maximum static load: 1600kg
- Optional accessories: Tray/division plate

### Enhanced access control

New data center cabinet series provides optional advanced security methods. New electronic lock provides various method for security control based on customers' security policy. Access Code, IC Card, biometric access.



### Product list

Aginode ref.	Description	Specifications
N300.C2322S	42HU General Cabinet, 600x600, Perforated Radius Door, Front and rear both splitdoors, with 2 fans, cable management bracket	42HU 19in 600x600mm (WxD)
N300.C2522S	42HU General Cabinet, 600x800, Perforated Radius Door, Front and rear both splitdoors, with 2 fans, cable management bracket	42HU 19in 600x800mm (WxD)
N300.C2922S	42HU General Cabinet, 600x1200, Perforated Radius Door, Front & rear both split doors , With 4 fans, screws, cable management bracket	42HU 19in 600x1200mm (WxD)
N300.C1522S	42HU General Cabinet, 800x800, Perforated Radius Door, Front and rear both split doors, With 4 fans, screws, vertical cable manager and cable management bracket	42HU 19in 800x800mm (WxD)
N300.C1922S	42HU General Cabinet, 800x1200, Perforated Radius Door, Front and rear both split doors, With 4 fans, screws, vertical cable manager and cable management bracket	42HU 19in 800x1200mm (WxD)
N300.CB722S	46HU General Cabinet, 800x1000, Perforated Radius Door, Front & rear both split doors , With 4 fans, screws, vertical cable manager and cable management bracket	46HU 19in 800x1000mm (WxD)
N300.CX922S	52HU General Cabinet, 800x1200, Perforated Radius Door, Front & rear both split doors , With 4 fans, screws, vertical cable manager and cable management bracket	52HU 19in 800x1200mm (WxD)
N300.CY922S	58HU General Cabinet, 600x1200, Perforated Radius Door, Front & rear both split doors , With 2 fans, screws, cable management bracket	58HU 19in 600x1200mm (WxD)
N300.CZ922S	58HU General Cabinet, 800x1200, Perforated Radius Door, Front & rear both split doors , with 4 fans, screws, vertical cable manager and cable management bracket	58HU 19in 800x1200mm (WxD)

## Open Rack

### Application

The high quality open rack is used for installation of Aginode cabling products. The main structure of the open rack is made of high strength aluminium-magnesium alloy; it is simple and portable in design, and can be equipped with narrow or wide vertical cable managers on both sides, which are suitable for a large number of cables; it is simple in installation and can be fixed on the ground to increase the stability of the rack, protect the stability of the cable management tray, lines and equipment; and it can be used for rack-type servers.

- ANSI/EIA-310-C/D
- Good ventilation performance
- The fixed column of the equipment is marked with the number of RMU by silk screen to facilitate the accurate positioning of the equipment
- Maximum load: 800kg~1,000kg
- Optional accessories:
  1. Vertical cable wire management
  2. Tray/division plate



### Product list

Aginode ref.	Description	Specifications
N302.C418	Two-pillar open rack 45U	45HU 19in 517x376mm (W x D)
N302.C428	Four-pillar open rack 45U	45HU 19in 530x1,036mm (W x D)
N302.C416	Two-pillar open rack 42U	42HU 19in 517x376mm (W x D)
N302.C426	Four-pillar open rack 42U	42HU 19in 530x1036mm (W x D)
N322.C128	Vertical cable wire management 3.65' Suitable for 45HU two-pillar rack, Width 90mm Depth 312mm	45HU 90x312mm (W x D)
N322.C126	Vertical cable wire management 3.65' Suitable for 42HU two-pillar rack, Width 90mm Depth 312mm	42HU 90x312mm (W x D)
N322.C129	Vertical cable wire management 3.65' Suitable for 45HU four-pillar rack, Width 90mm Depth 194mm	45HU 90x194mm (W x D)
N322.C127	Vertical cable wire management 3.65' Suitable for 42HU four-pillar rack, Width 90mm Depth 194mm	42HU 90x194mm (W x D)
N322.C228	Vertical cable wire management 6' Suitable for 45HU two-pillar rack, Width 154mm Depth 312mm	45HU 154x312mm (W x D)
N322.C226	Vertical cable wire management 6' Suitable for 42HU two-pillar rack, Width 154mm Depth 312mm	42HU 154x312mm (W x D)
N322.C229	Vertical cable wire management 6' Suitable for 45HU four-pillar rack, Width 154mm Depth 194mm	45HU 154x194mm (W x D)
N322.C227	Vertical cable wire management 6' Suitable for 42HU four-pillar rack, Width 154mm Depth 194mm	42HU 154x194mm (W x D)
N322.C328	Vertical cable wire management 8' Suitable for 45HU two-pillar rack, Width 205mm Depth 312mm	45HU 205x312mm (W x D)
N322.C326	Vertical cable wire management 8' Suitable for 42HU two-pillar rack, Width 205mm Depth 312mm	42HU 205x312mm (W x D)
N322.C329	Vertical cable wire management 8' Suitable for 45HU four-pillar rack, Width 205mm Depth 194mm	45HU 205x194mm (W x D)
N322.C327	Vertical cable wire management 8' Suitable for 42HU four-pillar rack, Width 205mm Depth 194mm	42HU 205x194mm (W x D)
N312.418	Tray/division plate Suitable for two-pillar rack, net depth 500mm, rack bilateral tray 2U	2HU 500mm Depth
N312.428	Tray/division plate Suitable for two-pillar rack, net depth 700mm, rack bilateral tray 2U	2HU 700mm Depth
N332.428	Four-pillar rack side plate, 45HU rack, black	
N332.448	Four-pillar rack side plate, 42HU rack, black	
N312.438	Tray/division plate Suitable for four-pillar rack, net depth 700mm	700 mm Depth

\* Please consult Aginode local sales for other specifications.

## Wall Mountable Cabinet

### Application

The high quality wall mountable cabinet is used for installation of Aginode integrated cabling products. The main structure is made of combined aluminum-magnesium alloy profiles and are closely combined with positioning three-way joints. Equipment fixed column can be adjusted back and forth to make the cabinet being suitable for placement of all kinds of small 19" frame; The appearance of the case is screw-free, so as to increase the aesthetic effect of the case.

- ANSI/EIA-310-C/D
- The fixed column of the equipment is marked with the number of RMU by silk screen to facilitate the accurate positioning of the equipment.
- Mesh flat door
- Moveable side door
- Optional accessories: cable manager



### Product list

Aginode ref.	Description
N301.338	Wall mounted cabinet 15HU 19in, Depth 600mm, mesh flat door
N330.018	Aluminum blank panel, 1HU
N330.028	Aluminum blank panel, 2HU

## Overhead Patching Frame

### Description

Installation of 19-inch patch panel  
Suitable for high density patching in data center  
Optional patch cord management loop

### Features

LANmark overhead patching frame is suitable for data center and can be hoisted under the grid bridge. Vertical and inclined planes can be selected for installation. The inclined surface is easy for maintenance personnel to operate. The overhead patching frame can be installed with copper cable and fibre patch panel, optional 2HU, 4HU.



### Product list

Aginode ref.	Description
N345.420CH	LANmark Overhead Patching Frame 2HU, Metallic
N345.400WCH	LANmark Overhead Patching Frame 4HU, Metallic
N345.400BCH	LANmark Overhead Patching Frame 4HU, Black
N345.401	LANmark Overhead Patching Frame Cable Management Loops

#smartconnection



Contact us via  
[info@aginode.net](mailto:info@aginode.net)

[www.aginode.net](http://www.aginode.net)

